

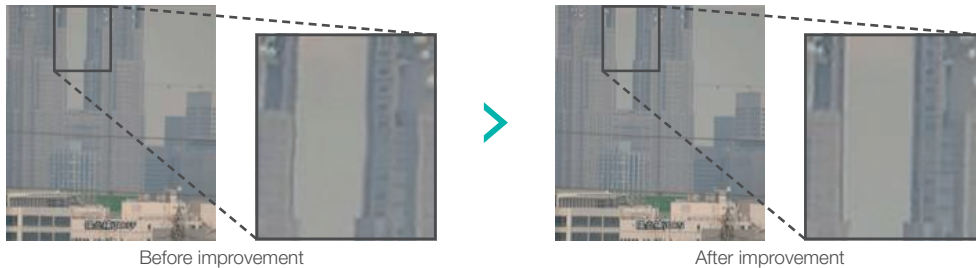
Heat Haze Mitigation Board for Long Distance Surveillance System VG-2000PCB

VG-2000PCB Heat Haze board can be easily integrated into Hitachi's camera interface system or can be configured as a stand alone board.



■ Features

Real time heat haze correction



■ Specifications

| item | Spec. | |
|-----------------------------------|--------------------------|--|
| External Interface | SDI In/Out | HD-SDI (SMPTE292M, 1920 x 1080/29.97p) |
| | Or CVBS In/Out | NTSC/PAL : VBS 1.0 Vp-p / 75Ω (future support) |
| | SIO | UART (3.3V LVCMOS) |
| | Power | DC5V Input |
| LED | LED 1-4 | Operation status |
| Power | Input Voltage Range | DC5V (DC4.5 - 5.5V) |
| | Power Consumption | Less than 12.5W * |
| DipSwitch | DSW 1-4 | ALL 'OFF' is default setting. Please don't change Dip switch settings. |
| Heathaze Mitigation | Correction Strength | Strong/Weak |
| | Latency | Low : less than 1 frame duration Normal : Less than 3 frame duration |
| | Edge Enhancer | ON/OFF |
| | Through Mode | ON/OFF |
| | Center Marker | ON/OFF |
| Control | Parametera/Status Mngmt. | Protocol : KPD Protocol Baudrate : 115,200bps |
| | Remote firmware update | Protocol : XMODEM 1K Baudrate : 115,200bps Update duration : about 15minutes Error Recovery |
| Temperature | | Operating Temperature : -10°C - 60°C (Requires appropriate heat dissipation. There is no guarantees of heat radiation performance.) Storage Temperature : -20°C - 70°C |
| Humidity | | Less than 90% RH (Non-condensing) |
| Assuming Installation Environment | | Inside of outdoor camera housing case. Uptime is 24 hours/day |
| Dimension | | 60mm(W) × 17.5mm(H) × 105mm(D) (include protruding parts) |
| Weight | | less than 70g |

* When using a power supply unit whose power capacity is less than 60 W, select the power supply unit with overcurrent protection function.

⚠ CAUTION : To ensure safe operation, please read the instruction manual before using this product.

Hitachi Kokusai Electric Inc.

These Specifications are subject to change without notice.

Hitachi Kokusai Electric America, Ltd. URL: <http://www.hitachikokusai.us/>

Headquarters : 104 Feeding Hills Rd. Southwick, MA 01077, USA
Phone: +1 (833) 227-1658

Northeast Sales : Phone : +1 (860) 757-3892

South Sales : Phone : +1 (850) 934-1234

West Office : 11258 Monarch Street, Unit H, Garden Grove, CA 92841, U.S.A.
Phone : +1 (714) 895-6116, Fax : +1 (714) 895-6252

Midwest Sales : Phone : +1 (330) 334-4115

Latin / Canada Sales : Phone : +1 (516) 682-4408