

Install Manual Version 1.1

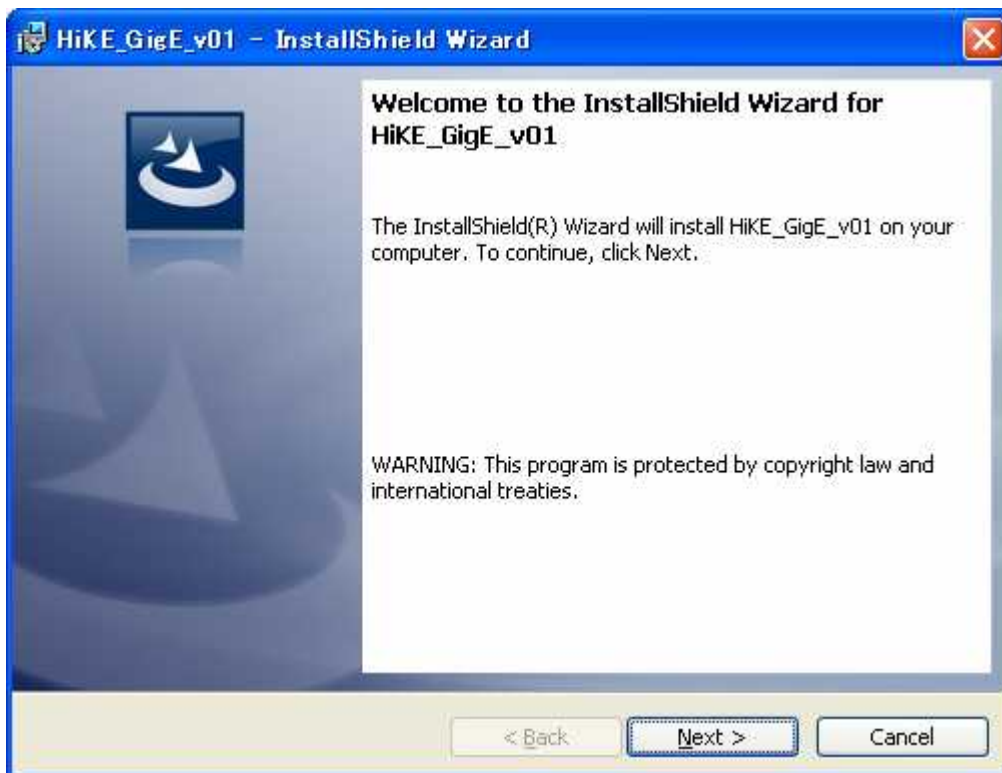
20th May, 2008

0. If other GigE Vision driver has been installed in NIC, the Hitachi driver may not work well, so please uninstall it.

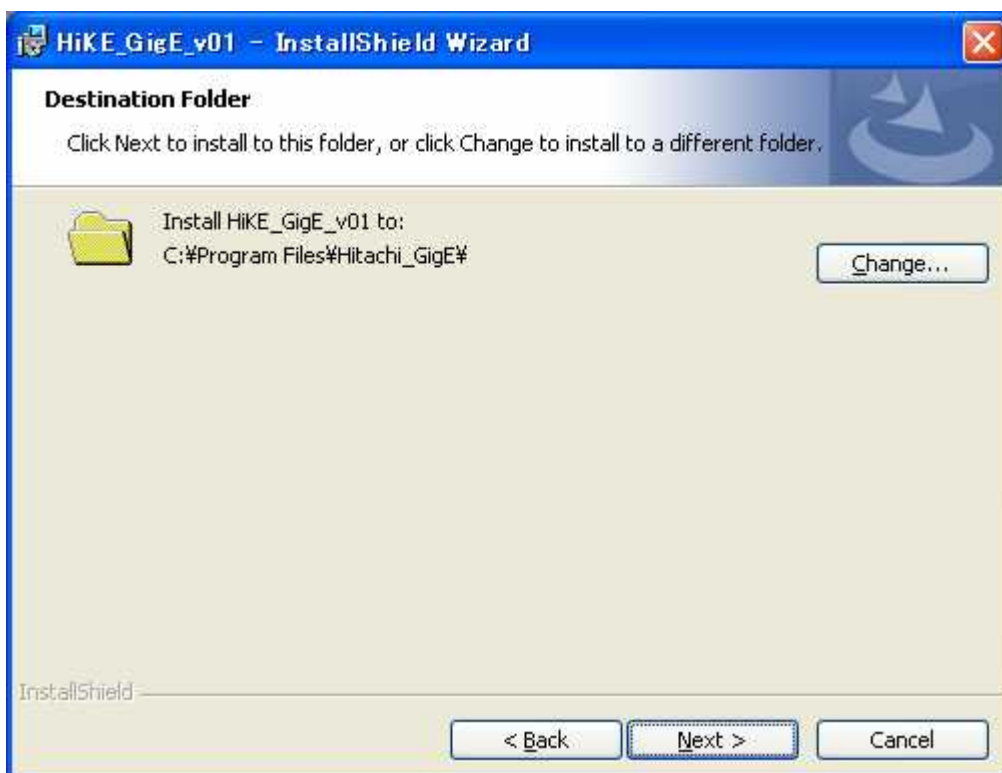
1. Please double click "HitachiGigECamera.exe" in the CD-ROM.



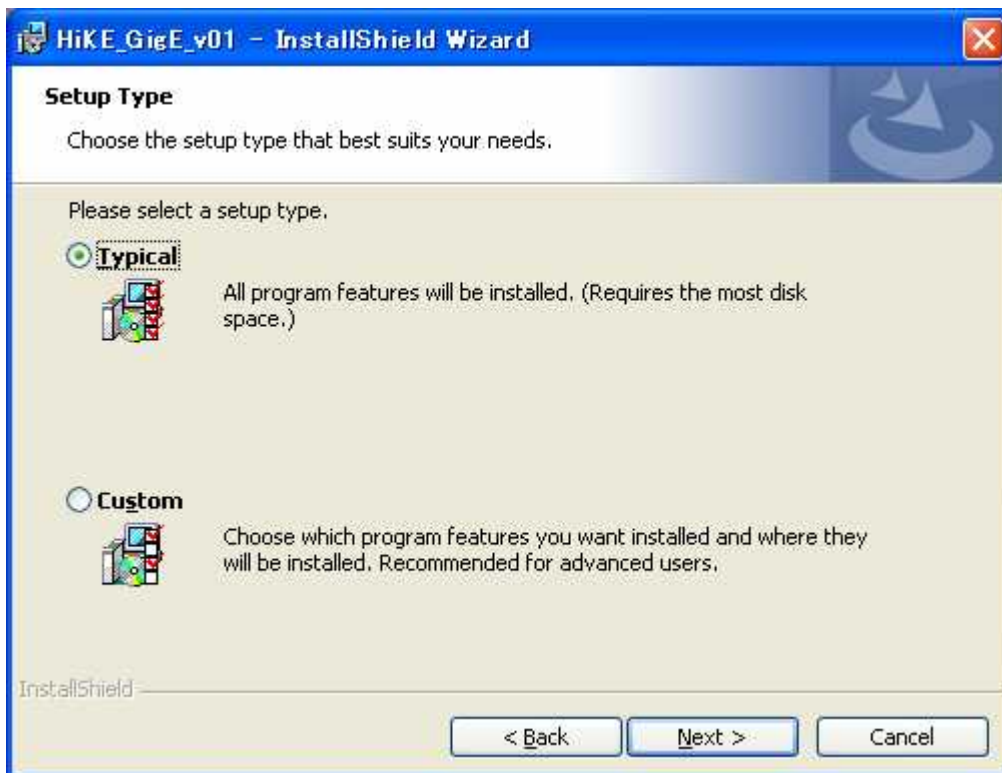
3. Please click "Next"



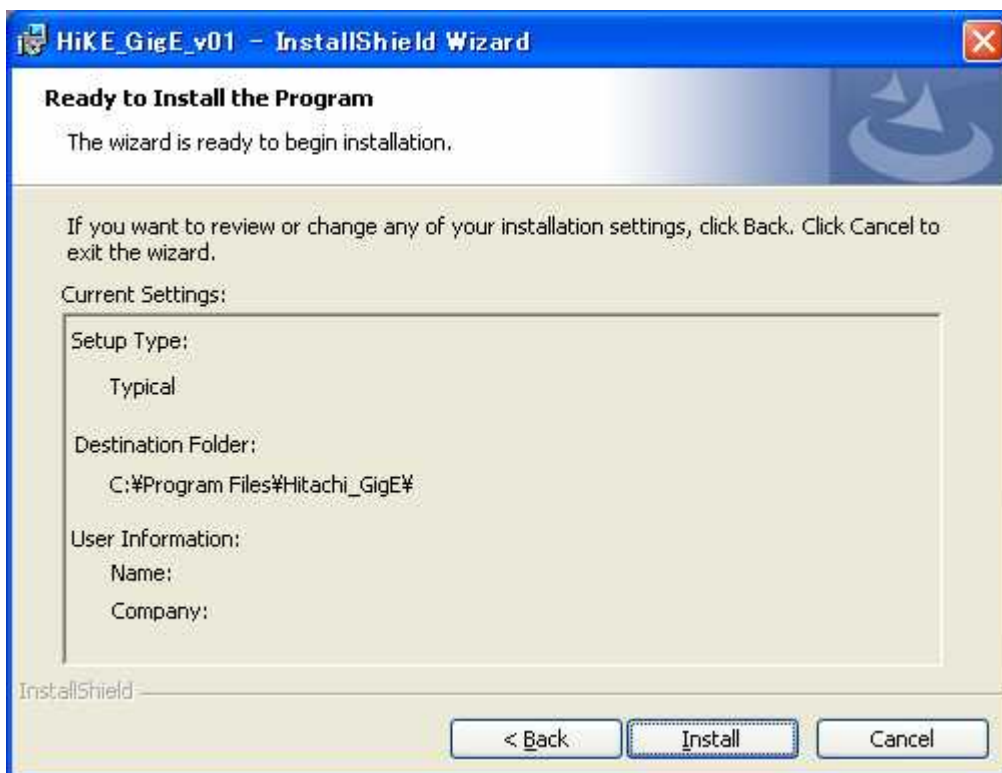
4. Please set install folder and click "Next"



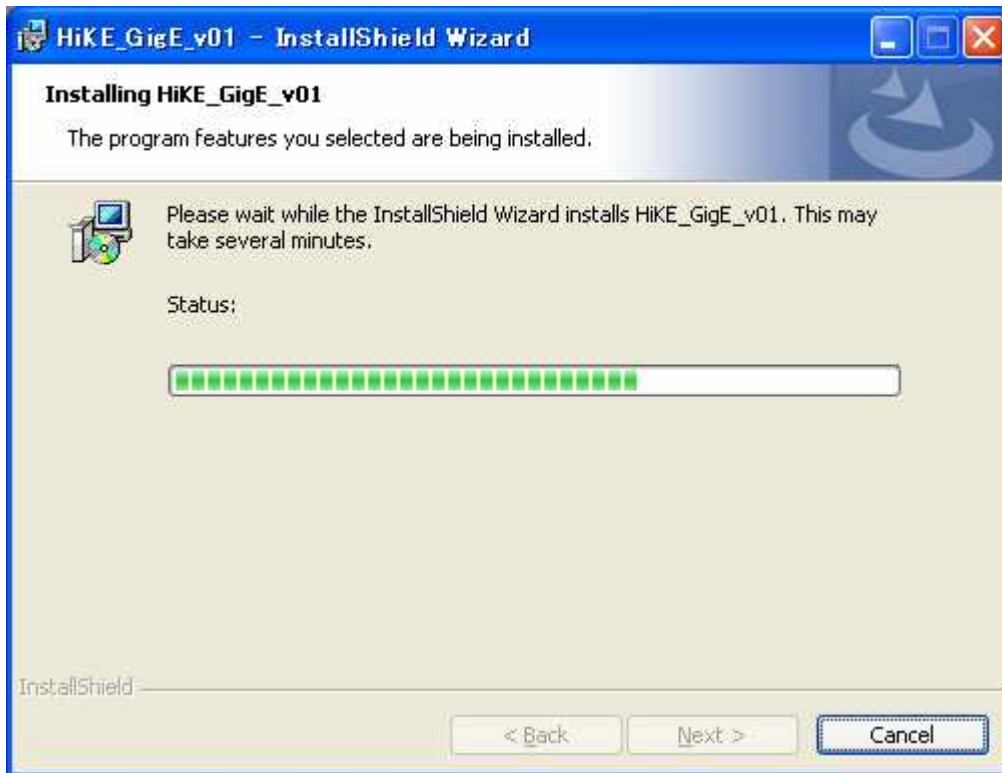
5. Please select "Typical" or "Custom" and click "Next"



6. Please click "Install" and installation is started.



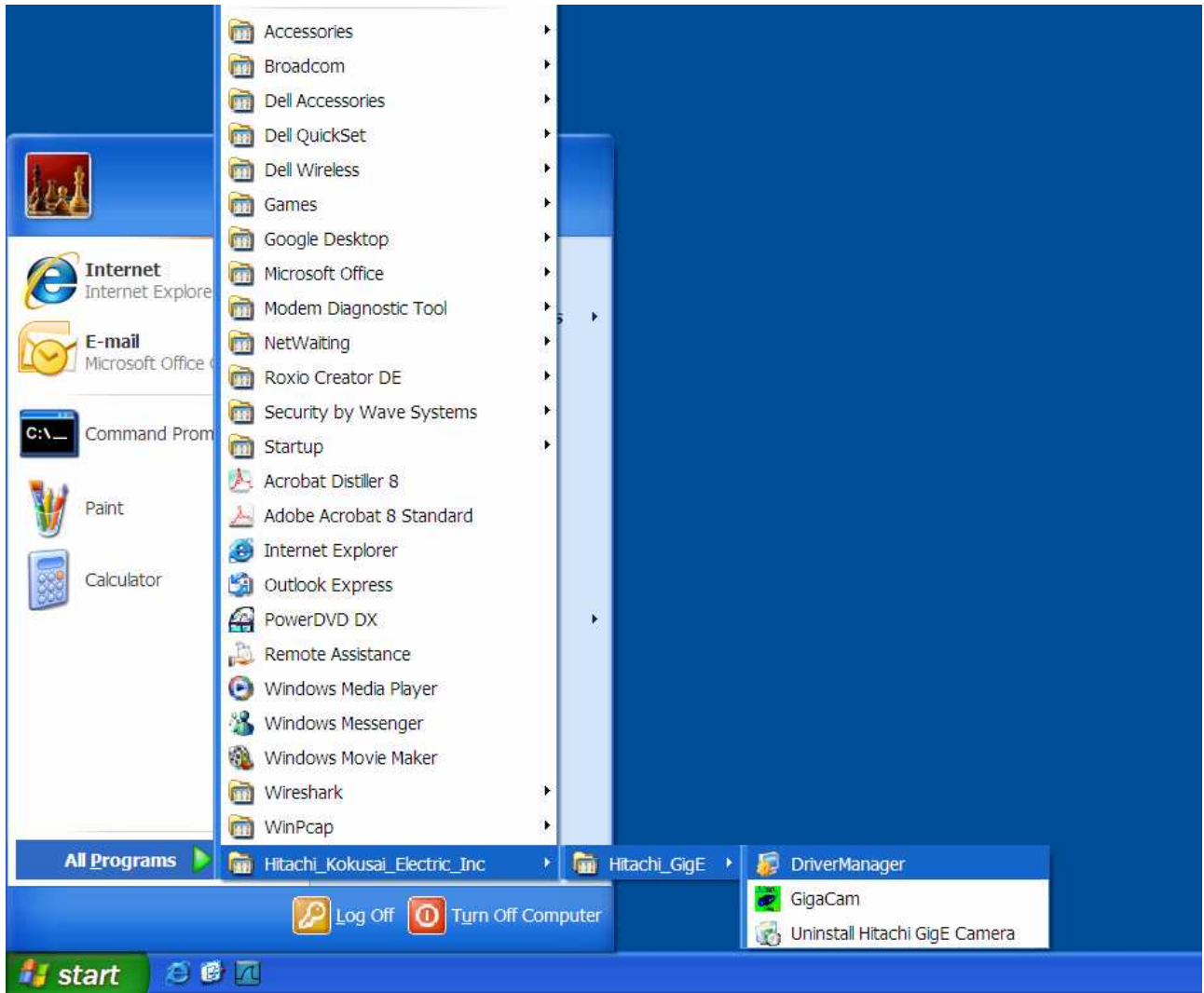
8. Please wait for a while.



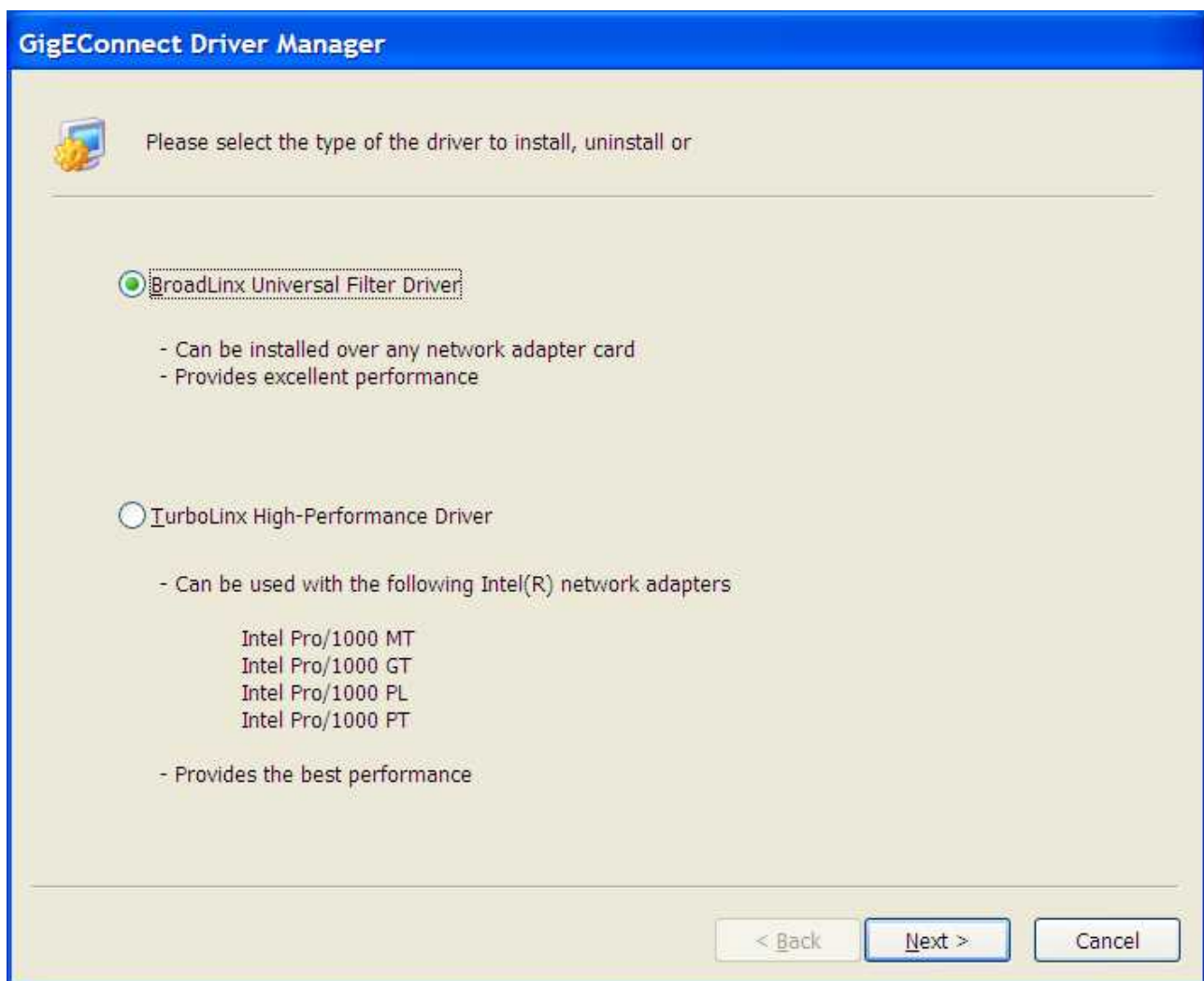
9. Please click "Finish"



10. Please select "Start" --- "Program" --- "Hitachi_Kokusai_Electric_Inc" --- "Hitachi_GigE"--- "Driver Manager"



11. Please select "BroadLinx ..." and click "Next"



12. Please select "Install ..." and check installed NIC and click "Next"

GigEConnect Driver Manager



Configure BroadLinux Universal Filter Driver

Install BroadLinux Universal Filter Driver on these network interfaces:

- CG-LACBGTR
- Broadcom NetXtreme 57xx Gigabit Controller

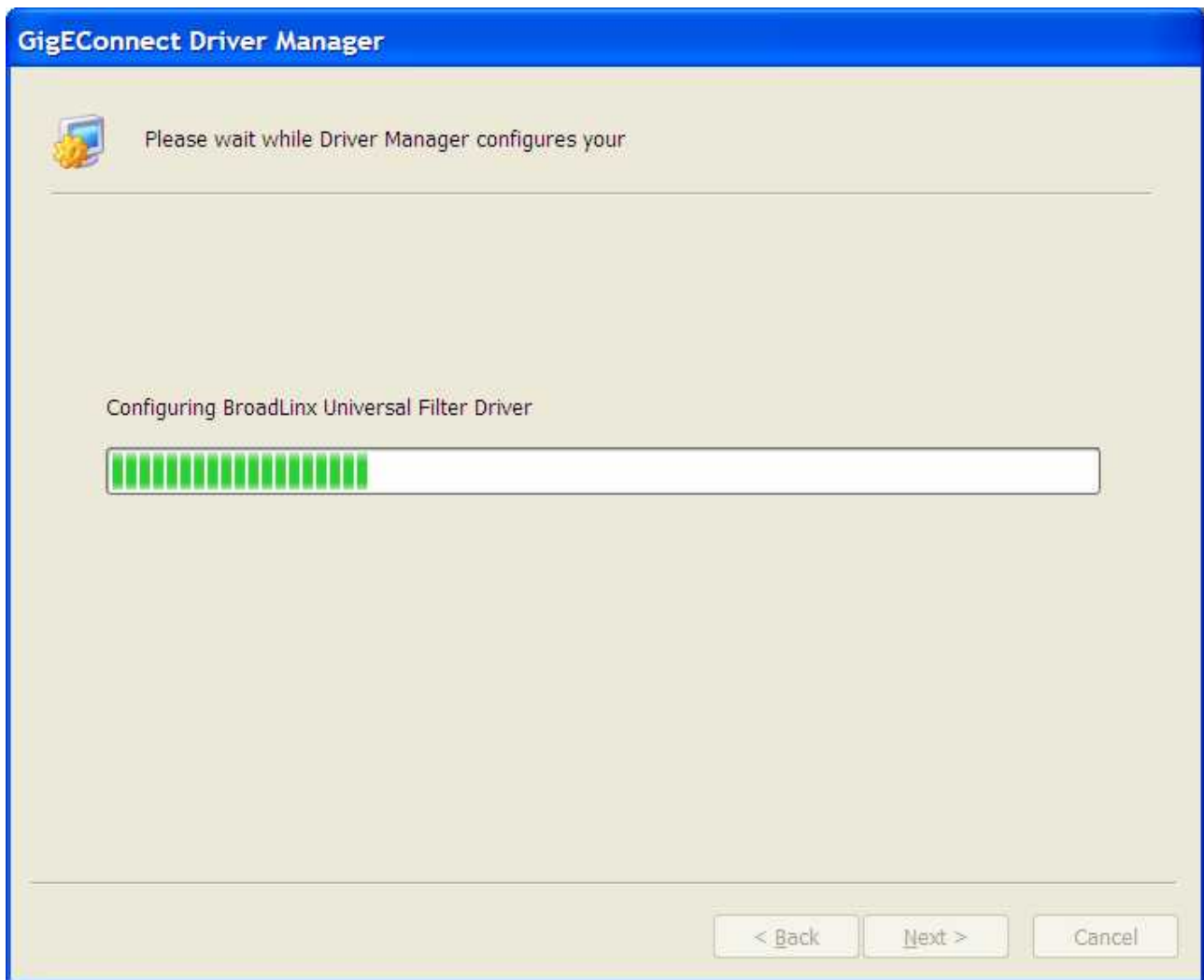
Uninstall BroadLinux Universal Filter Driver

< Back

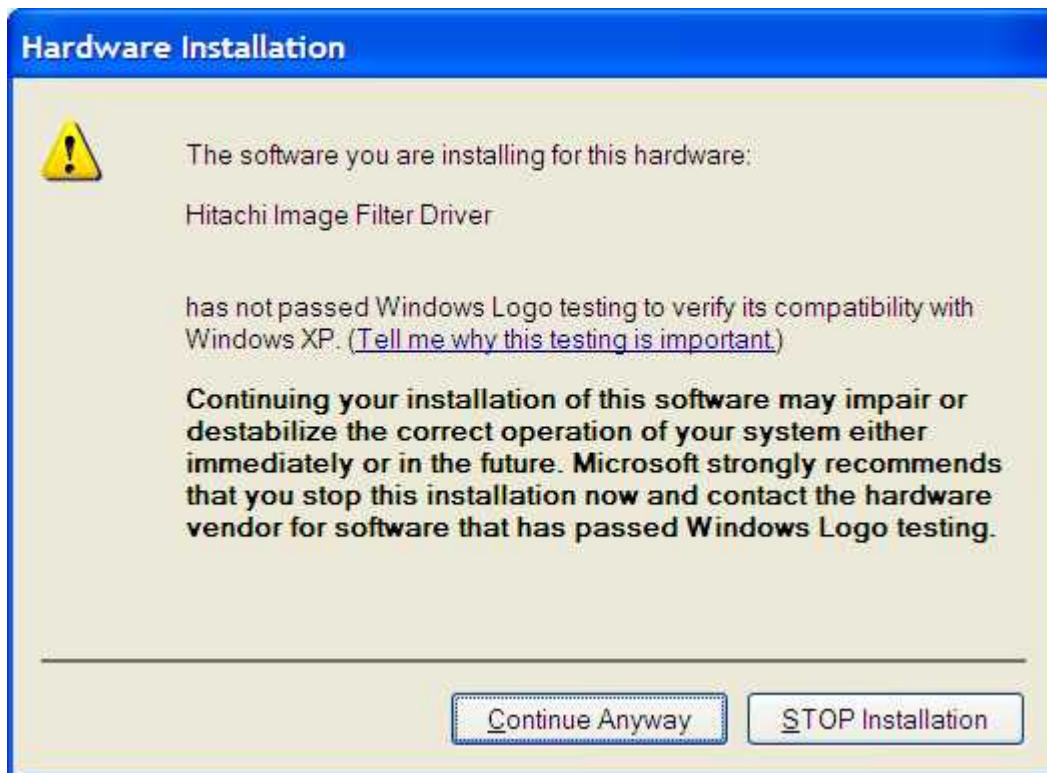
Next >

Cancel

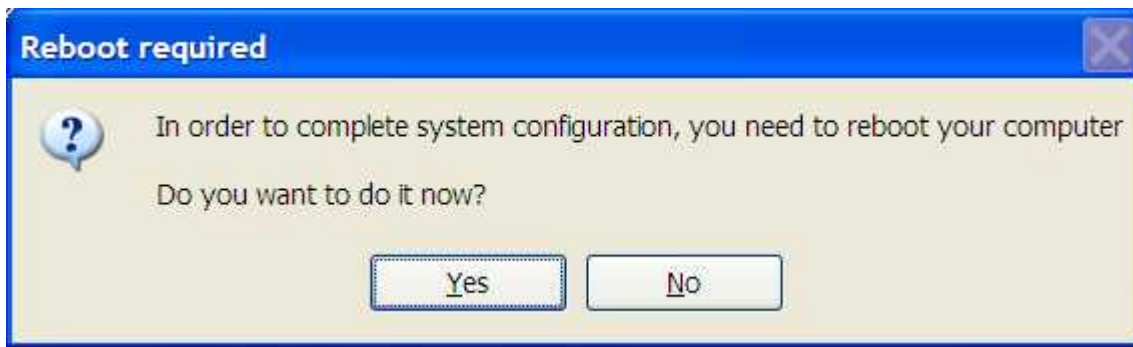
13. Please wait for a while.



14. Please click "Continuous"



15. Please click "Yes" and restart the PC automatically

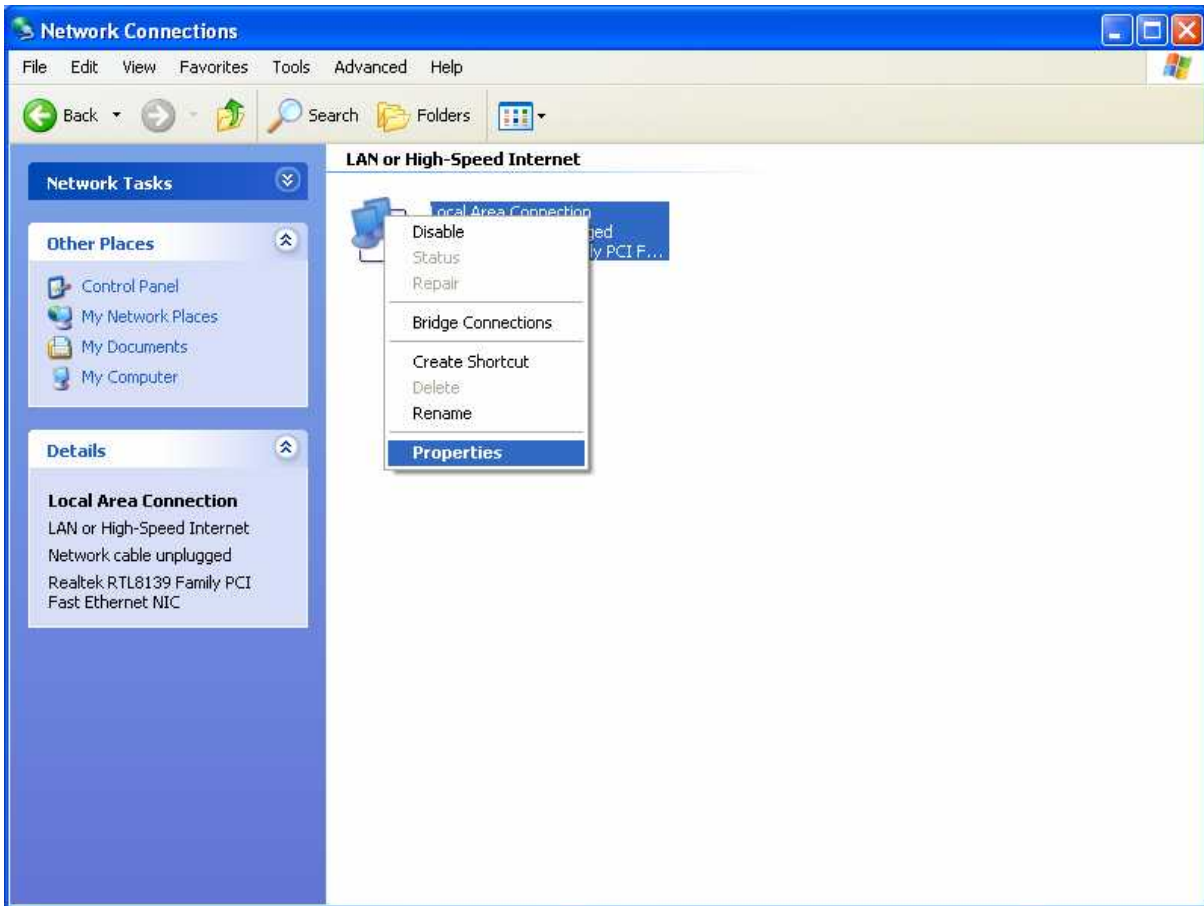


16. Installation is finished

IP address of NIC Setting

When recognition of the camera is slow, please set IP address to NIC by following process.

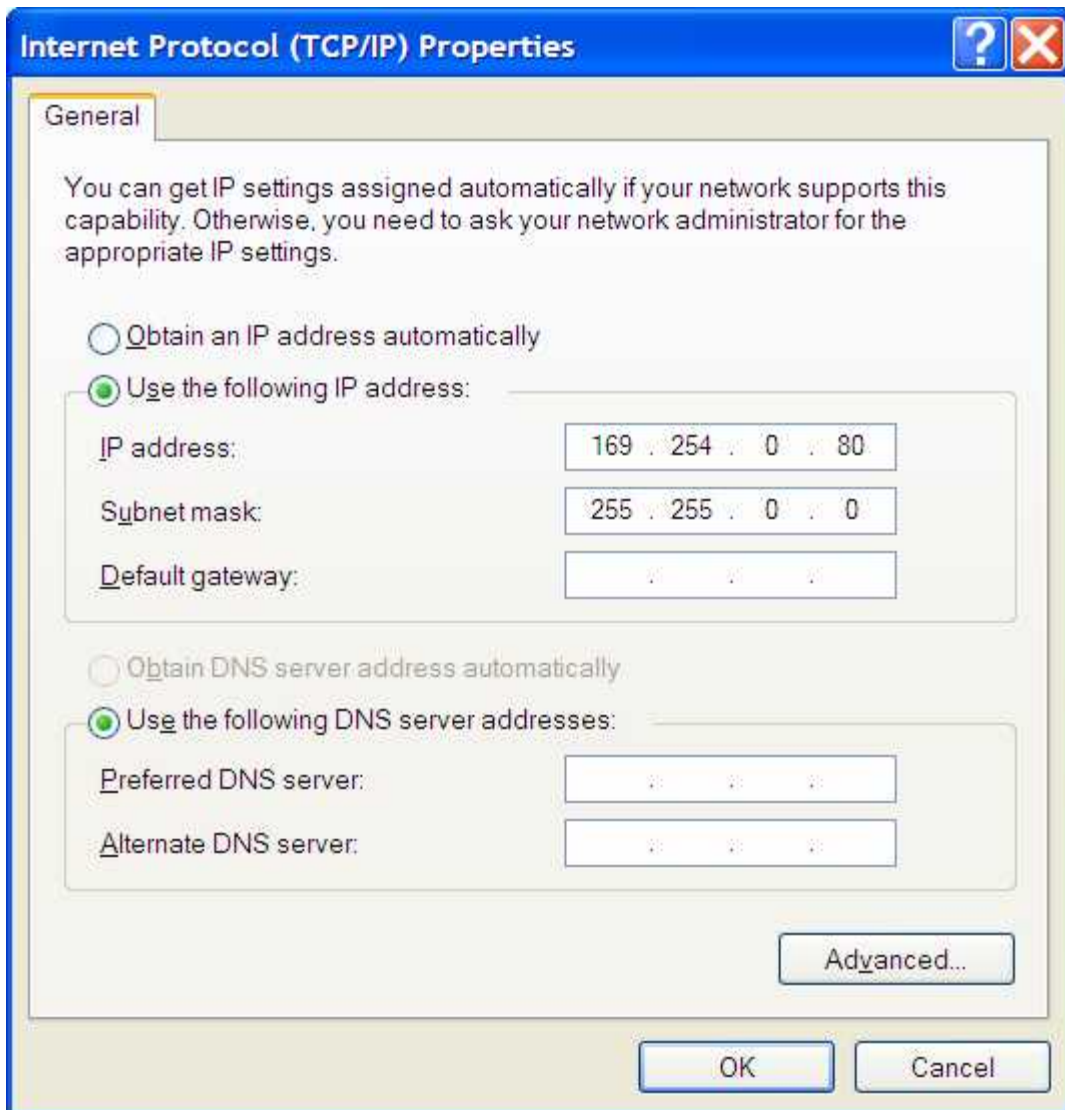
1. Open the property of "My network"
2. Open the property of "Local area connection"



3. Open the property of "Internet protocol (TCP/IP)"

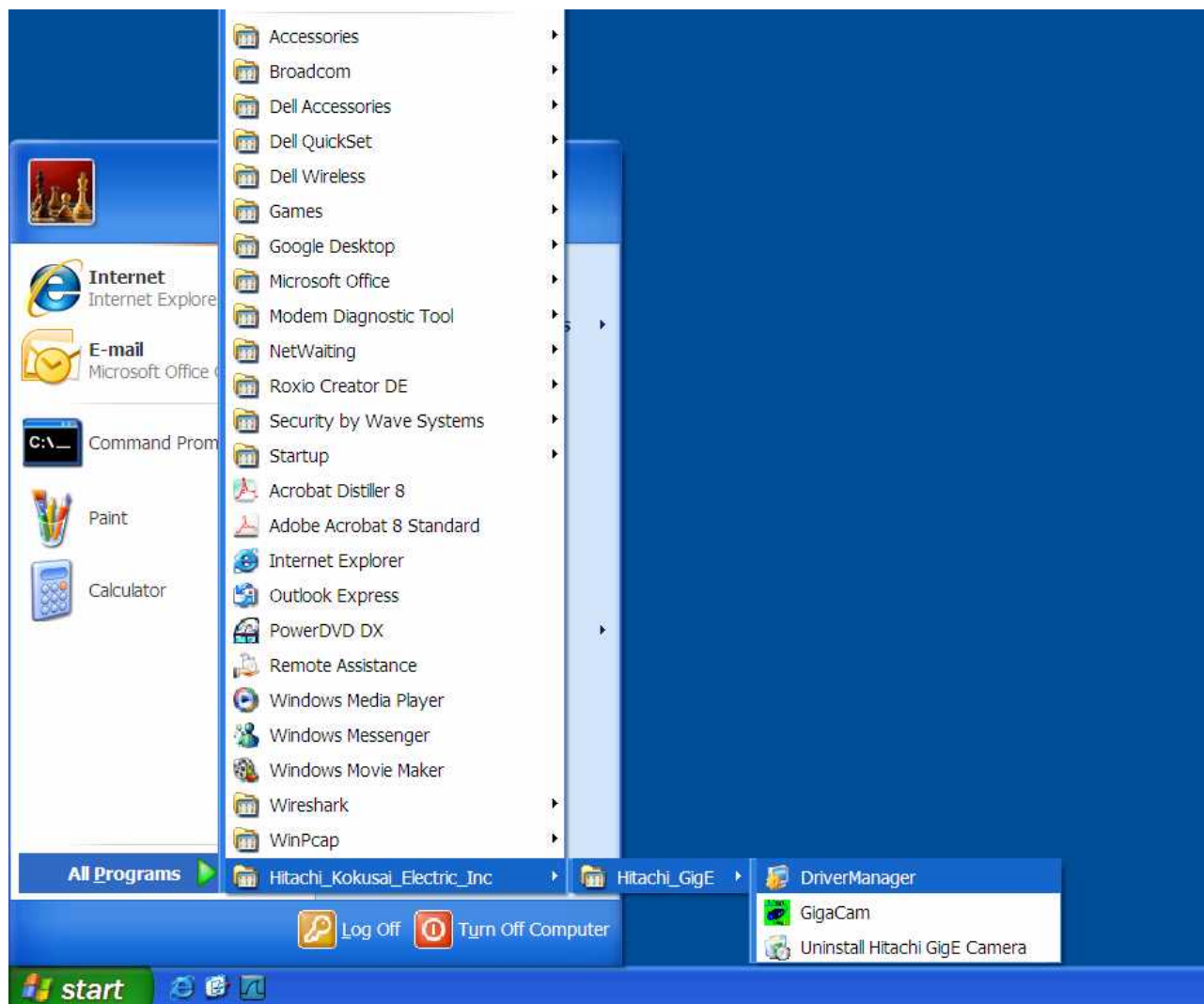


4. Set IP address (169.254.xx. xx) and Subnet mask (255.255.0.0)
(* "xx" is optional value of 0 to 255)

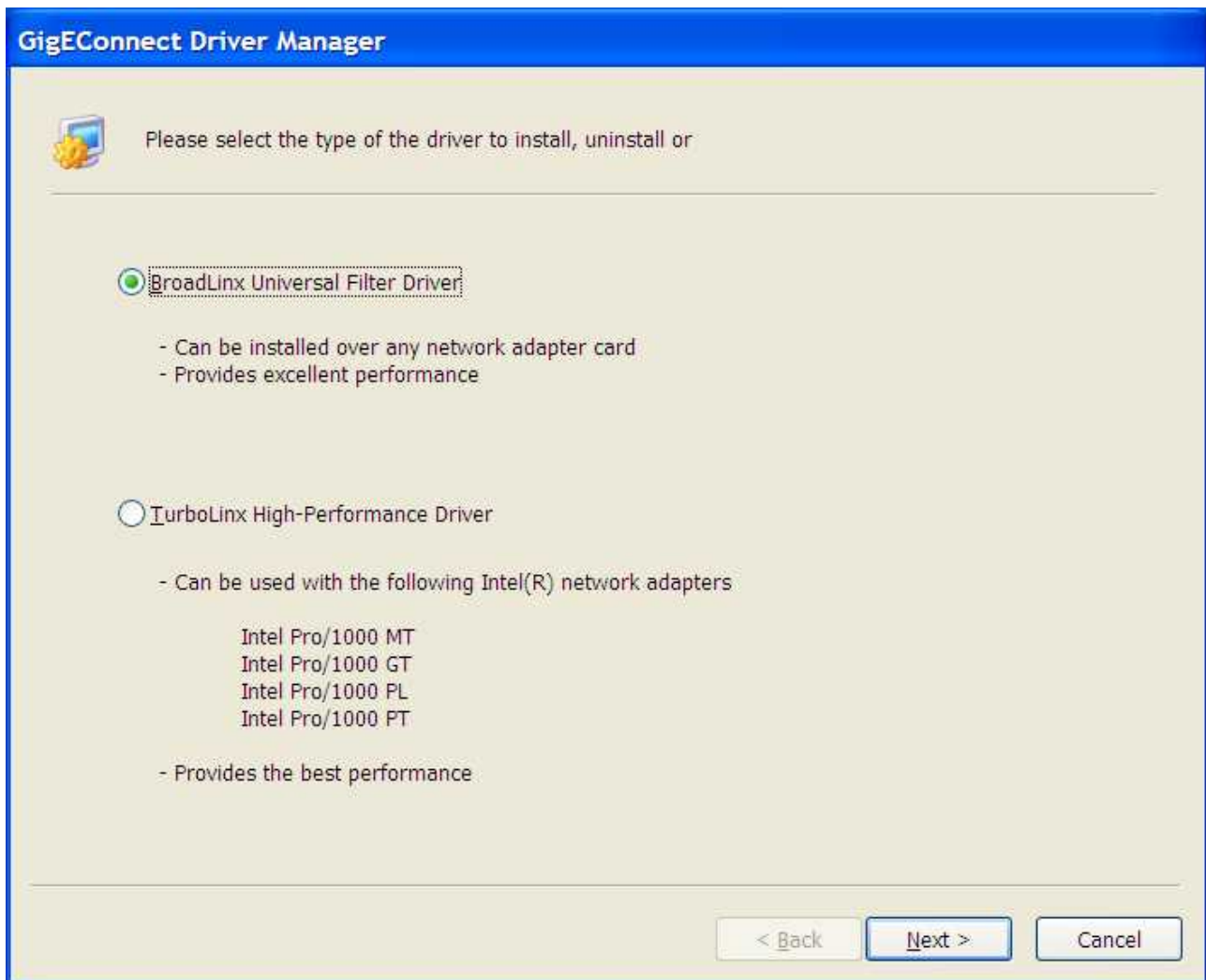


Uninstall Manual

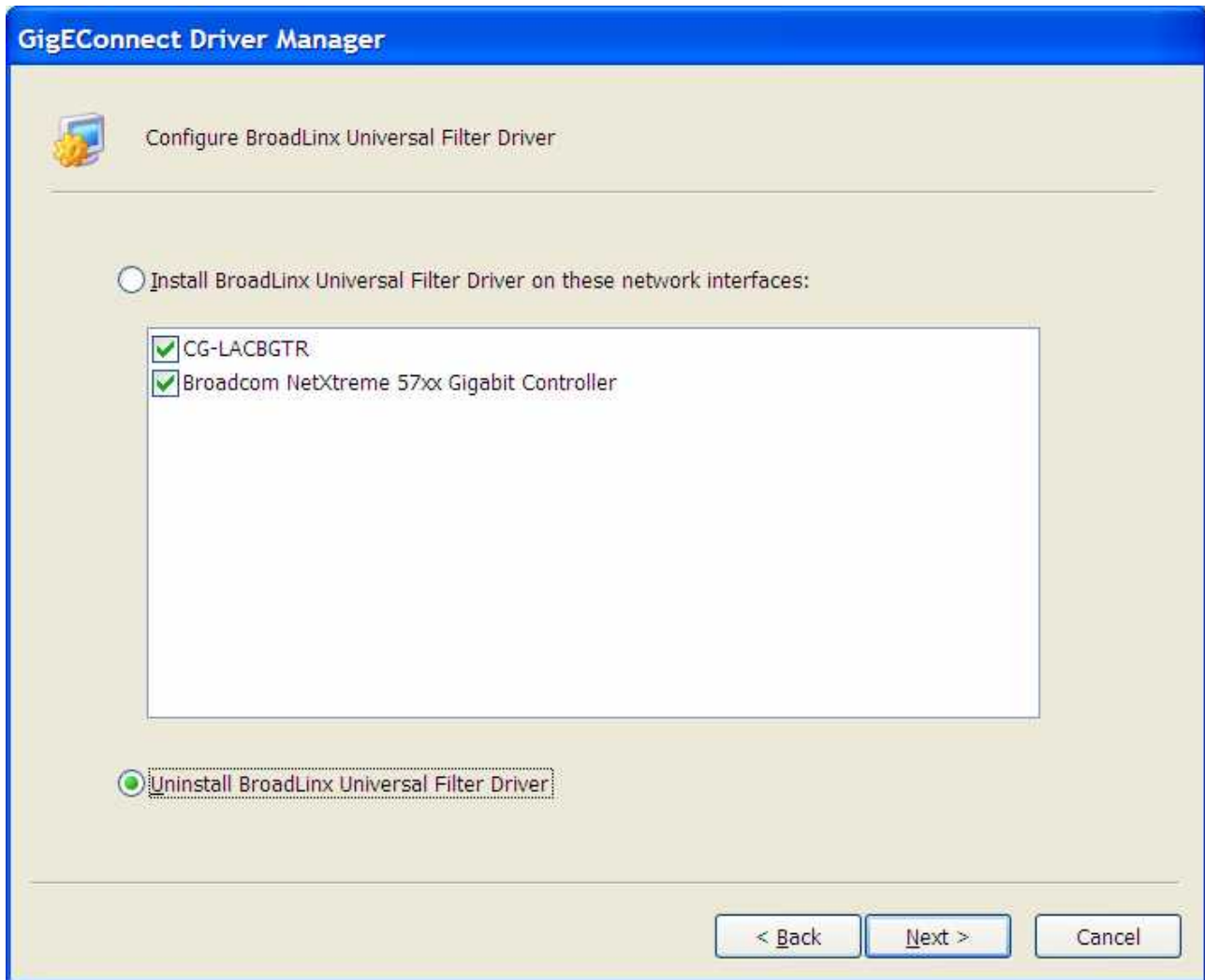
1. Please select "Start" --- "Program" --- "Hitachi_Kokusai_Electric_Inc" --- "Hitachi_GigE"--- "Driver Manager"



2. Please click "Broad ..." and click "Next"




3. Please select "Uninstall ..." and click "Next"




4. Please wait a while

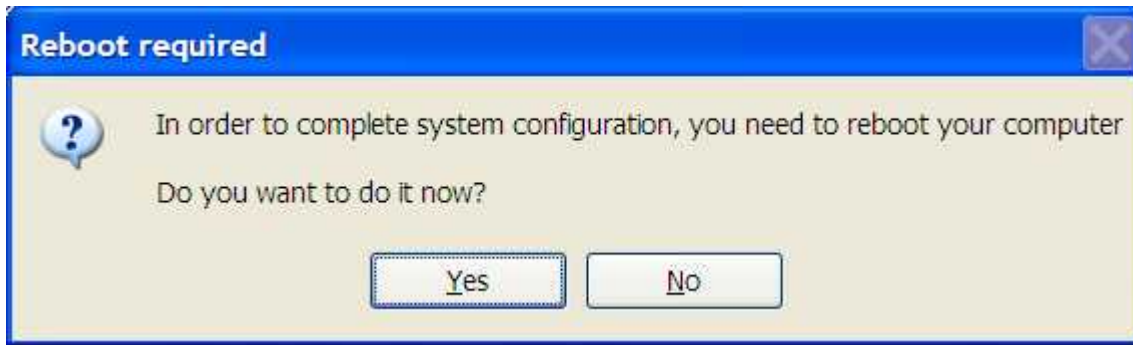
GigEConnect Driver Manager

 Please wait while Driver Manager configures your

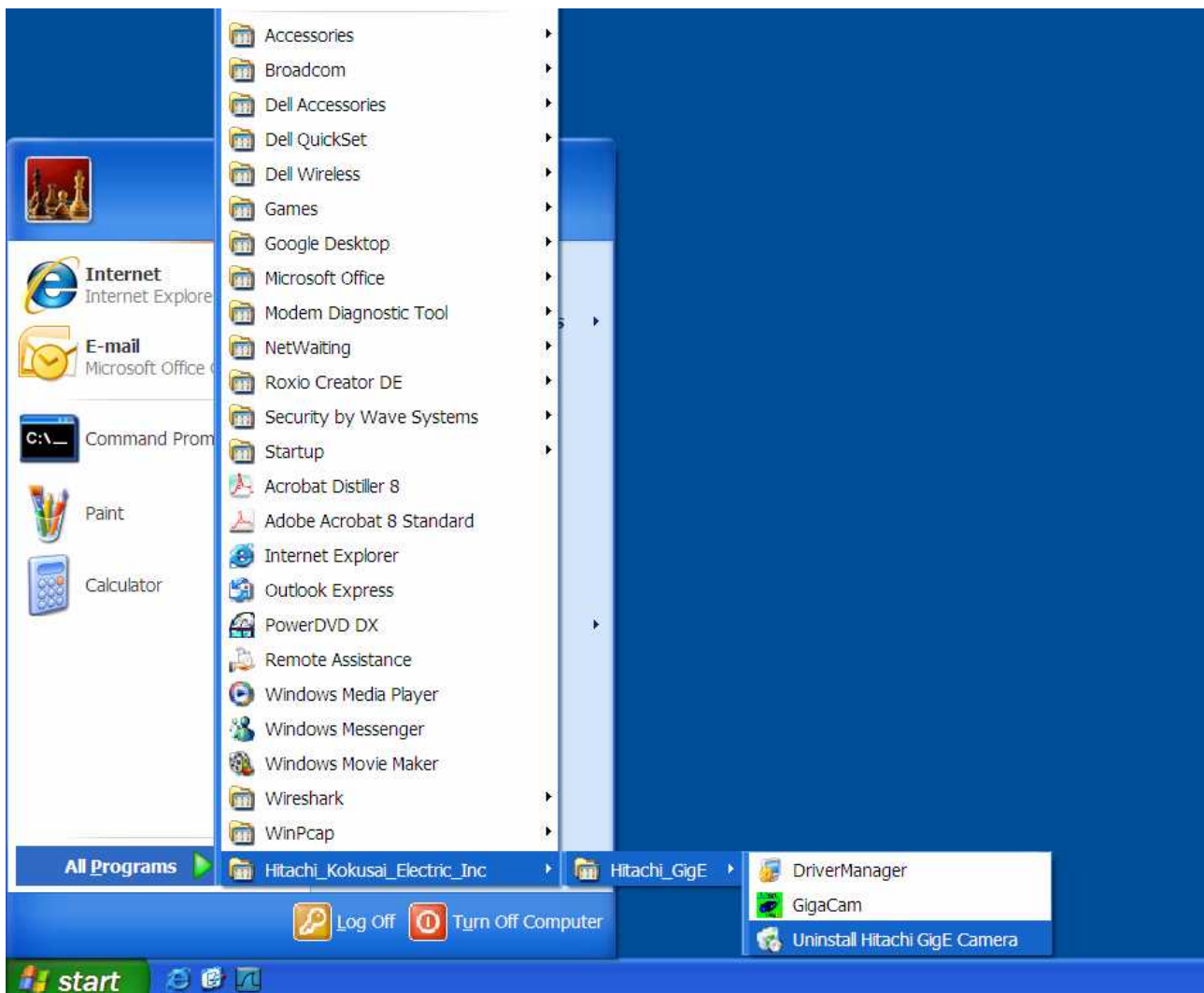
Configuring BroadLinux Universal Filter Driver



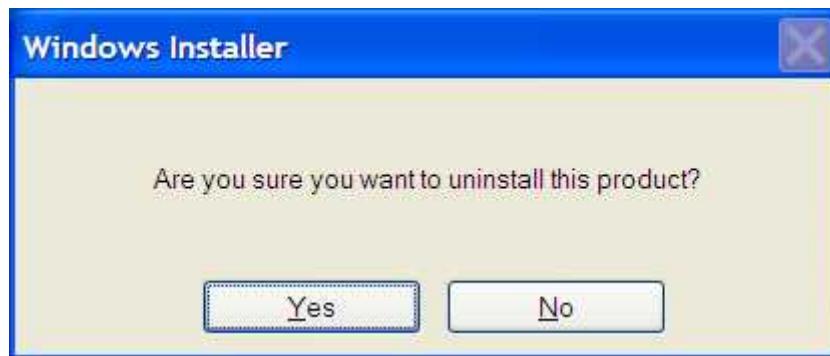
5. Please click "Yes" and restart automatically



6. Please select "Start" --- "Program" --- "Hitachi_Kokusai_Electric_Inc" --- "Hitachi_GigE" --- "Uninstall Hitachi GigE Camera"



7. Please click "Yes".



8. Please wait a while and uninstallation is finished.

